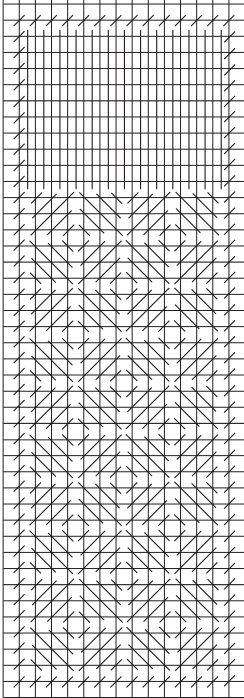


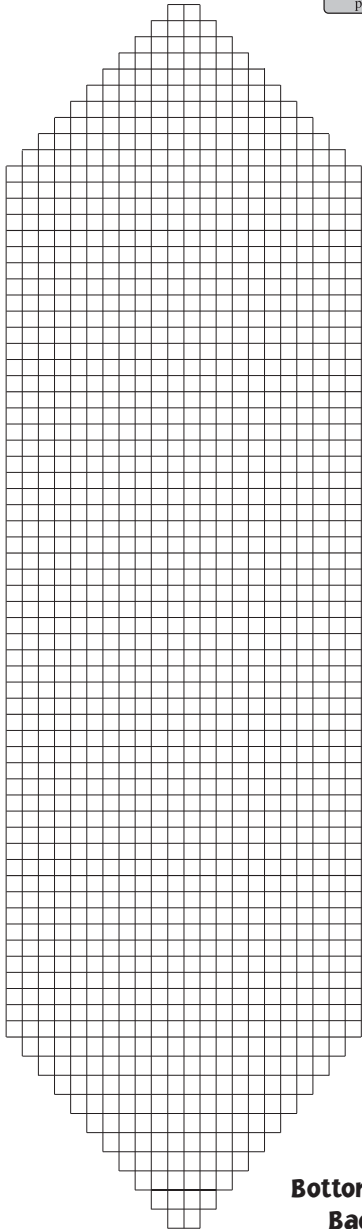
Crafts.  
Discover life's little pleasures.

**Skill Level: Advanced**  
**Approximate Time: 12 Hours**



**End Of  
Bag**

**for reference only  
not actual size**



**Bottom Of  
Bag**

©2004 Darice Inc. All rights reserved. No part of this publication may be reproduced and/or stored in any information retrieval system, electronic or physical, without written permission of the publisher, Darice Inc. Limited reviewer rights to quote brief passages in editorial or advertising media is hereby granted. DISCLAIMER: The information in this publication is presented in good faith, but no warranty is given, no results guaranteed, nor is freedom from any patent to be inferred. Since we have no control over the physical conditions surrounding the application of information herein contained, Darice Inc. disclaims any liability for unfavorable results. Printed in U.S.A. Published by Darice Inc., Cleveland, Ohio 44149-3800



**Darice®**

Item #37210

# CREATIVE CRAFTS

## Plastic Canvas Eyelash Yarn Bag

Design by: Bill Palasty



## Supplies

- 2 Sheets Clear Plastic Canvas-10.5" x 13.5"
- 3 oz. 4 ply worsted weight yarn
- 1 Skein Eyelash Yarn
- Plastic Crystal Beads-20 pieces-12mm, 34 pieces-10mm, 16 pieces-8mm
- 20 Gauge Silver Wire-4 pieces-18" long

## General supplies:

- # 16 Plastic Canvas Needle
- Ruler
- Scissors
- Wire Cutters
- Pliers

## Cutting:

- Cut front and back, each 54 holes wide x 43 holes tall.
- Cut 4 end pieces, each 15 holes wide x 43 holes tall.
- Cut one bottom piece using chart.

## Stitching:

- To start stitching, leave at least one inch of yarn on the back of the canvas and work the first few stitches over this end to anchor it.
- To end stitching, run the end of yarn under the last few stitches and cut excess yarn.
- Stitch entire bag using 4 ply yarn first. The bag is then assembled, handles added and the eyelash yarn stitches added last. This way the "eyelashes" will not get in the way of assembly.

1. Bottom: Fill entire bottom piece with Tent stitches.
2. End pieces: following chart, stitch each end as shown. The long top stitches are the ones that will be filled in later with the eyelash yarn. See note above.
3. Stitch the front and back in same manner as ends. There will be 17 small squares of stitches across the width of these pieces.

## Assembly:

1. Using Overcast stitches, stitch an end piece to each front and back.
2. Now join the ends, thus joining the front and back.
3. Lay the bottom in position. Join together, matching bottom edge of front/back to long edges of bottom. When joining the ends to the bottom, the bottom will have less holes, so just match as close as possible, taking an extra overcast stitch in the end piece here and there.

## Handles:

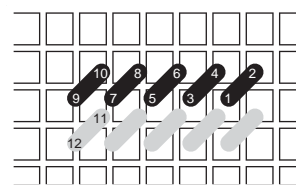
1. Lay two pieces of wire together for each handle. String beads on each wire as follows: 1-8mm, 1-10mm-4 times, 1-12mm, 1-10mm-10 times, 1-8mm, 1-10mm-3 times and one last 8mm.
2. On the front and back, count over from the outside edge and slide the wire thru the 6th hole, 4 holes from the top. Bend wire up and pinch with pliers and cut excess wire even with top edge of canvas.

Work the Overcast Stitches around the entire top edge of bag. When you reach the handles, wrap yarn around the wire twice and continue.

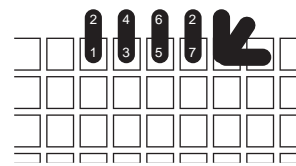
Thread eyelash yarn in needle. Fill in all around the bag making vertical stitches as shown on chart, but work 2 long stitches-shown on chart as one line. Eyelash yarn can be fluffed up with a toothbrush.

## Stitches Used For Eyelash Yarn Bag:

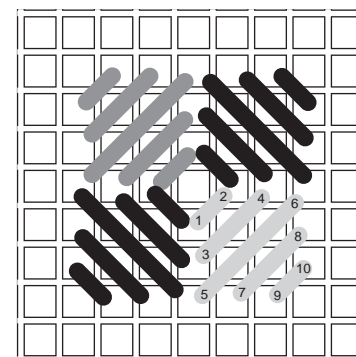
As numbered, the needle comes up thru the canvas on ODD numbers and down on EVEN numbers.



Tent



Overcast



Checkered  
Scotch